



NP15/120

**WORK SAFE TRAVELLING
WITH OVERHEIGHT LOAD**

Documentation Revision Control:

Name of Document	NP15/120 Work Safe Travelling with Overhead Loads
Effective Date:	January 2024

	Designation
Written By:	Network Services (Standards)
Approved By:	Engineering Manager

Approval Date:	January 2024
Revision Authority:	Engineering Manager
Revision Frequency:	Five yearly
Review Date:	2029

Document Revision	Description of Change	Date
Version 001	Initial Standard document	Sept 2012
Version 002	Update to include changes to Electricity Safety Regulations 2010	Sept 2013
Version 003	Update change reference "Permit" to "Consent"	Sept 2015
Version 004	Update change to Obtain Consents with sufficient notice.	Nov 2018
Version 005	Update changes (online methods, change of personnel)	Jan 2024

1.0 Purpose:

To prevent the electrical system from presenting a significant risk of:

- a) Serious harm to workers or members of the public: or,
- b) Damage to property owned by persons other than the electricity distributor.

2.0 Safety First: Work Safe

Electricity is dangerous if not treated with caution. This document contains information on the minimum acceptable standards which will promote safe working practices for contractors, subcontractors or anyone who is working close to electricity networks whether on private or public land.

2.1 Workers Legal Responsibility

You're legally responsible to follow the Occupational safety and Health Service minimum safe work practices for carrying out work near electricity works. For more information check their website.

Government regulations specify safe working practice as follows:

Electricity Act 1992.and Amendments
NZECP 34:2001- Electrical Safety Distances
Health and Safety at Work Act 2015.

2.2 Planning Your Work

Are you competent and authorised by your employer to complete the task? If you are not fully trained, or if you feel that you are not competent to complete the task, you must have a competent person to supervise your work.

2.3 Network Waitaki System Control

Network Controllers are responsible for checking safety of any proposed work, setting conditions to protect contractors and our electrical network.

System control is available on (03) 433-0065 during normal working hours or, 0800-440-220 for after hour's emergency faults

2.4 Network Waitaki Requirements

Network Waitaki has safety procedures that must be followed. If anyone is to travel with over-height loads, high load consent to travel must be obtained from NWL to travel under overhead power lines.

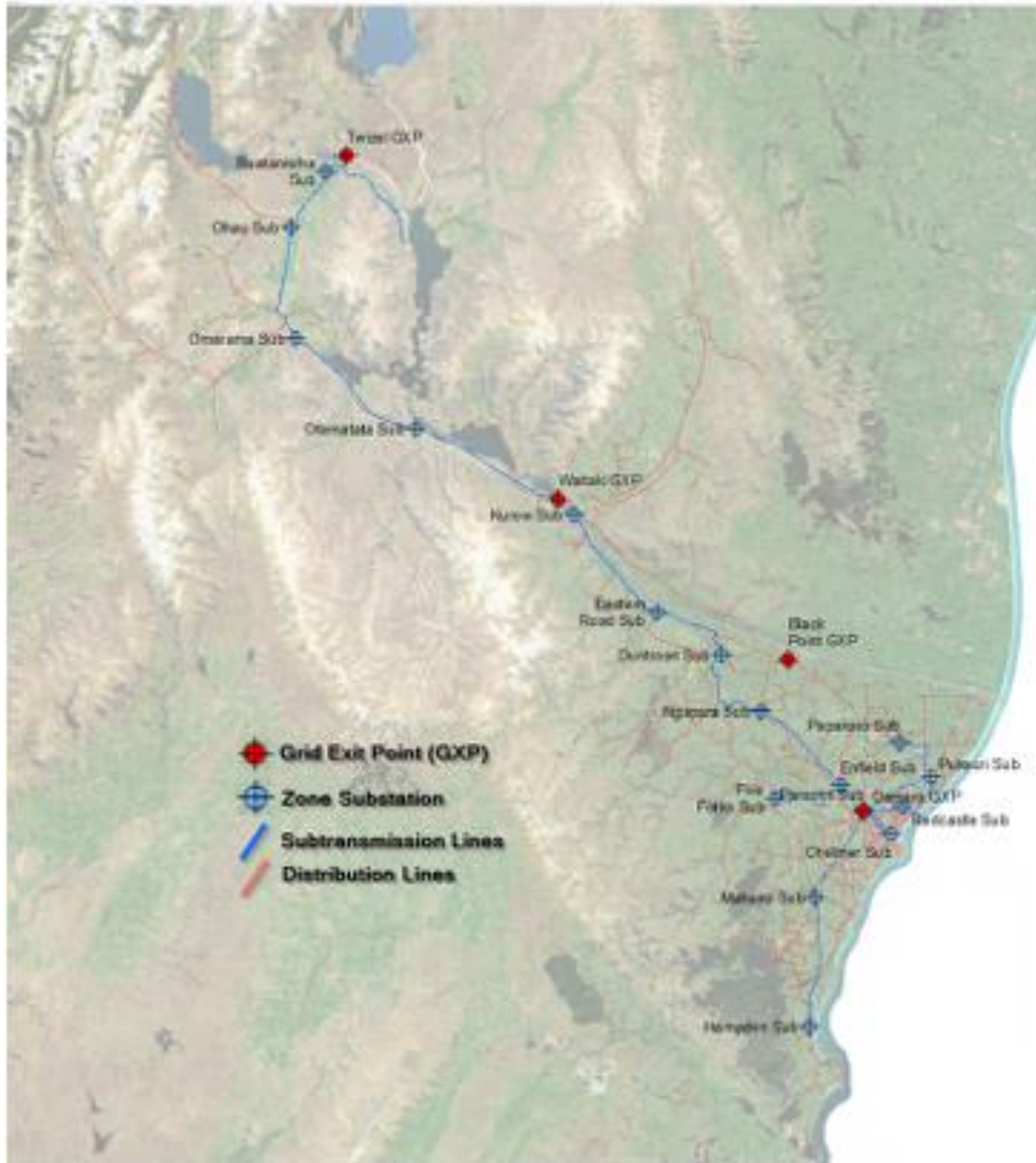


Figure 5 - Map of NWL area of supply and network extent

Network Waitaki Ltd Area is bounded by two other networks being:

Alpine Energy to the north, and
Otagonet Joint Venture to the south down to Shag Point near Palmerston.

3.0 Standard minimum height of Network Waitaki lines in the area:

High Voltage up to 33kV is 6.5m
Low Voltage 400V is 5.5m

Note: NWL provides this document for information only and does not accept any liability for any loss or damage suffered by the recipient of this document. The height of power lines could be lower due to pole movement or other unknown factors.

4.0 Application for Consent when Travelling with Over-Height Loads

Application forms for the transport of over height loads can be applied for our website at www.networkwaitaki.co.nz.

Where the travelling load exceeds 4.3m measured from road level, the haulage contractor must apply for a Close Approach Consent – Over Height Load Travel

The haulage contractor must provide NWL with the following information.

- A plan showing the proposed route,
- load height distance from ground level and width of the load and
- the projected timetable is to be included on the Consent.

Network Control will check that the height of the load and the lines that cross the road will not prevent safe passage of the load.

If there is a possibility the lines may not allow minimal safe clearance for passage, a network escort will be required and a charge will apply for the networks escort duty.

Where NWL is confident and satisfied as to the competence of the haulage contractor to deal safely with carriageway conductors along the route, it may grant Approval for travel without an escort.

5.0 Safety Clearances

The **EEA Guide for Transport of High Loads through Electricity Networks Area** can be obtained from www.eea.co.nz/publications/download, which recommends the following travel clearances under power lines.

Stay wires at nominal earth potential	200mm
Catenary supported aerial communication cables	200mm
Line Conductors not exceeding 1000 volts	300mm
Line Conductors not exceeding 22,000 volts	500mm
Line Conductors not exceeding 66,000 volts	800mm
Line Conductors not exceeding 110,000 volts	1200mm

Where the transport of a high load may encroach the above minimum clearances, NWL will require procedures which will make the transport operation safer, such as:

- Provide continuous insulating cover/ skids on top of the load for any low voltage overhead conductors.
- Temporarily raising the conductors.
- Isolating and earthing the line to let the load travel through.

Where the work requires electricity lines to be de-energised or disconnected because the recommended safety distances cannot be achieved, the work shall be performed under an Access Permit and under the continuous direct supervision of the Access Permit holder. The Permit holder shall be an Approved NWL Contractor who holds the appropriate NWL work competency classes.

Loads of up to 5.0 m in height may travel on side roads with written consent from NWL for unescorted travel.

Generally, written consent will be given from NWL for loads in excess of 5.0m on side roads and up to 5.2m on main roads for unescorted travel.

The height may be increased on selected routes with an escort from Network Waitaki Contracting Ltd.

6.0 Conditions for communicating with NWL escort

Loads of more than 5.0 m in height will have the haulage contactor piloting vehicle in attendance.

The following must be arranged with the NWL escort vehicle prior to granting final consent to travel:

- The haulage operator to provide the NWL escort with a hand held radio to assist with convoy communication (immediate warning can be given to negotiate any action to allow for safe passage).
- During road travel with a NWL escort, the transport vehicle must not activate the remote hydraulic load height variation without clear guidance from the NWL escort to ensure overhead live line contact is avoided.

Obtain Consents With Sufficient Notice.

Written consents and permits must be obtained when travel with:

- a) Loads 4.3 - 4.8m, **(2 working days' notice)** are required.

You will need to obtain written consent from NWL and any other owners of overhead obstructions that the load or vehicle can't clear safely.

- b) Loads 4.8 – 5.0m, **(2 working days' notice)** are required.

You will need to obtain written consent from NWL and any other owners of overhead obstructions that the load or vehicle can't clear safely.

You will also need to obtain permission from relevant rail service operations if the vehicle is going to travel over a railway crossing that doesn't cross a state highway, and the vehicle exceeds the height shown on an electrified railway safe height sign.

- c) Loads 5.1 – 5.3m, **(3 working days' notice)** are required.

Along with the above conditions you will need consent from the Over-dimension Permit issuing Agency (OPIA). Contact OPIA by freephone 0800 OVERSIZE (683 744).

- d) Loads 5.3 – 6.5m, **(5 working days' notice)** are required.

Along with the above conditions you will need consent from the Over-dimension Permit issuing Agency (OPIA). Contact OPIA by freephone 0800 OVERSIZE (683 744).

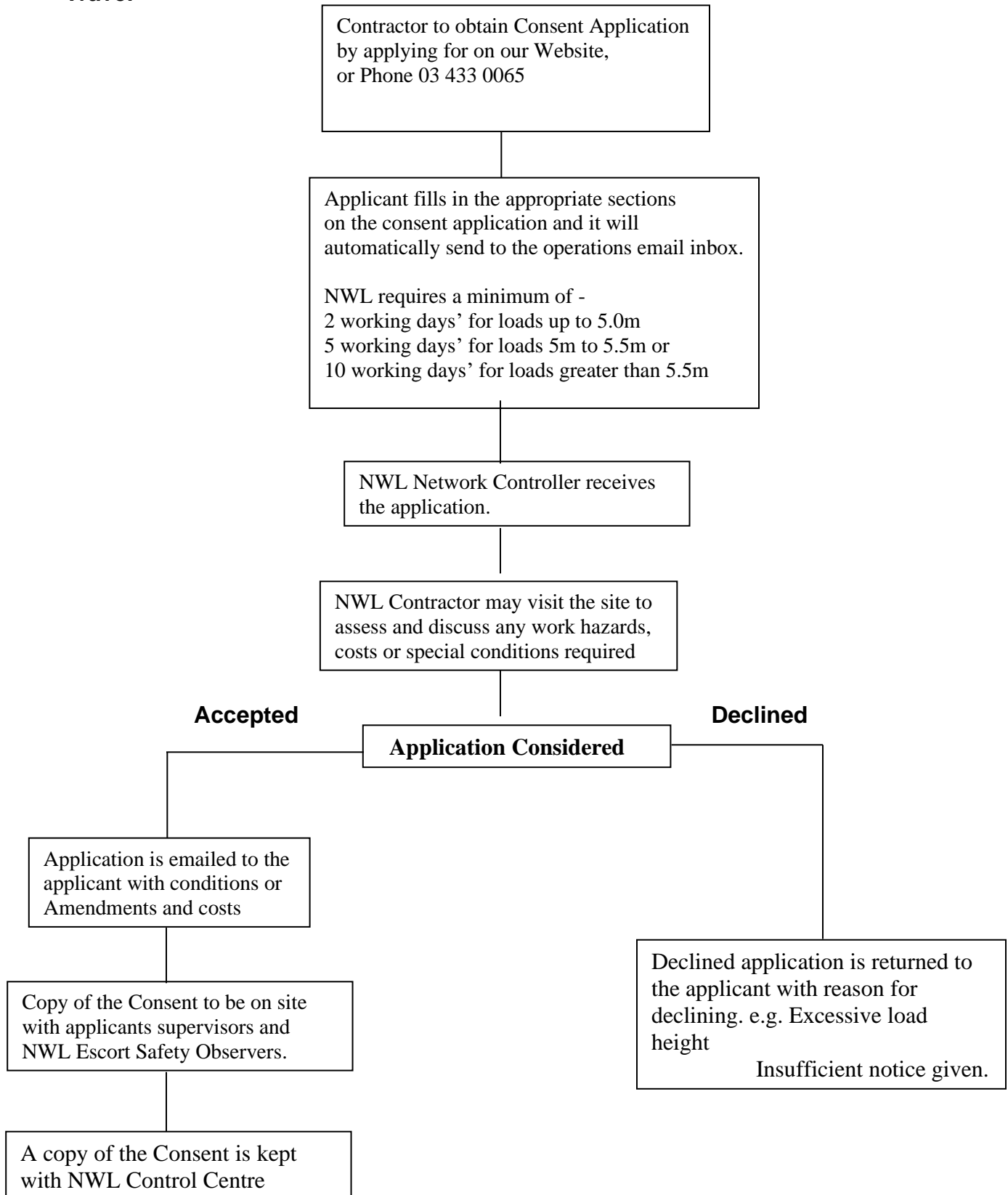
- e) Loads over 6.5m **(10 working days' notice)** are required.

Along with the above conditions you will also need written approval from the Transport Agency.

NWL SERVICE PROVIDER RESPONSIBILITIES

- Assessing the implications of transporting the Over-Height Load on NWL's Electricity Networks prior to transport of the load.
- Effectively communicating related conditions, implications, actions, costs to the Over-Height Load Transporter and NWL.
- Fair costing and payment.
- Arranging and taking appropriate actions to ensure damage to the electricity network shall not occur during transport of the Over-Height Load.
- Confirming with the High Load Transport Operator at least 24 hours before transport of the Over-Height Load.
- Health and Safety Hazard Identification and Management.
- Controlling hazards that may have impact on NWL's networks and the public posed by transporting the Over-Height Load.
- Persons associated with the operation.
- Members of the public and their property with respect to the presence of NWL's Electricity Networks along the length of the carriageway and any other networks, for example fibre and telecom, encountered during the operation.
- Acting in accordance with NWL standards, legislation, industry rules and standards, related guidelines and procedures.
- Measurement and check of the Over-Height Load before transport / works commence.
- Co-ordinating with NWL Network Controller over the cancellation or reissue (if appropriate) of the Permit where any load measures greater than the height specified on the Permit.
- Verifying the competency of NWL Service Provider employees escorting the Over-Height Load (where load is escorted).
- Co-ordination of the entire journey (may involve co-ordination with other service providers).
- Immediate repair of any damage to NWL's Electricity Networks at the Transport Operators expense.
- Reporting to NWL any damage, negligence or 'near miss' during transport of the Over-Height Load.
- Defecting and reporting lines below minimum clearance height above roadway.

Network Waitaki Process for Close Approach Consent for Over-Height Load Travel





Network Waitaki Limited
10 Chelmer Street
PO Box 147
Oamaru 9444

Telephone: 03 433 0065 (tel:034330065)
Facsimile: 03 434 8845
service@networkwaitaki.co.nz (mailto:service@networkwaitaki.co.nz)
https://www.networkwaitaki.co.nz (https://www.networkwaitaki.co.nz)

Over Height Load Consent

Consent No: 2883

Contact Details	
Company Name: TDM Transport	Date of Application: 16/01/2023
Postal Address: 639b Tauwhare Rd Hamilton 3287 New Zealand	Contact Name: Jamie Peacock
Contact Email: permits@tdmtransport.co.nz	Contact Phone: 0272645776

Load Details	
On Site Supervisor: trent montgomery 0273334247	Supervisor Phone: trent montgomery 0273334247
Proposed Date: 2023-01-17	Proposed Time: 05:00
Load Type: Portable Buildings	Height Above Road: 4.95 M
Travelling From: lakes way harewood christchurch	Width - Overall: 3.6 M
Travelling To: regina lane oamaru north oamaru	Width-Highest Point: 3.6 M
Proposed Route: Portacom Lakes Way Harewood Chch Sawyers Arms Rd Broughs Rd McLeans Island Rd Pound Rd SH1 Main South Rd to Oamaru regina lane	
Other Details:	

The Company making this request:

- Agrees to install full length insulating skid rails over the top, appropriate to the type of load, to prevent snagging overhead power lines (if required in conditions below). NOTE: The load will not proceed unless NWL escort considers the skid rails satisfactory.
- Agrees that any Consent granted will be valid only for the date and times entered on this form.
- Declares that the information entered, including the date, time of entry and maximum height is correct.
- Agrees, if the information entered is incorrect, and as a result damage is suffered, to indemnify and keep indemnified Network Waitaki Ltd (NWL) against such damage, including consequential damage and legal costs associated with the same.
- Agrees to take all due care, whether or not the load is escorted.
- Understands that the issuing of this Consent by NWL does not exempt the Consent holder from liability arising from damage to NWL network caused by the load, whether it is escorted or not.
- Agrees to abide by the directions of NWL escort in respect to safeguarding of NWL network conductors and associated equipment during the transport of this load.
- Agrees that remote hydraulic operation of the load height may only be activated when approved by the NWL escort.
- Agrees to pay all charges in connection with the transport of this load.

For NWL Use

Consent Approved By	Consent Conditions
Name: Peter Illingworth	Escort Required <input checked="" type="checkbox"/> / NO
Signature:	Radio Communications Required: <input checked="" type="checkbox"/> / NO
Date: 16/01/23	Full Length Insulating Skid Rails Required: YES / <input checked="" type="checkbox"/>
Escort Contact: Network Waitaki Contracting – 0800 440 220 (Select Option 2)	