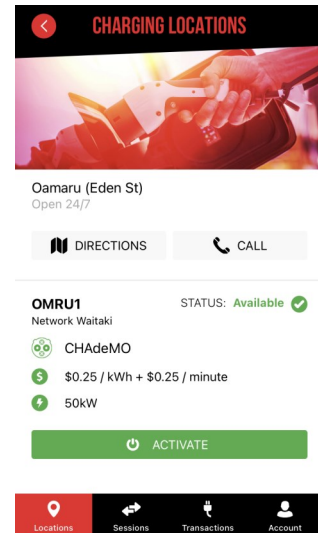
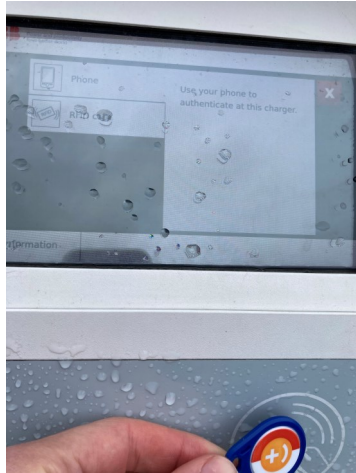
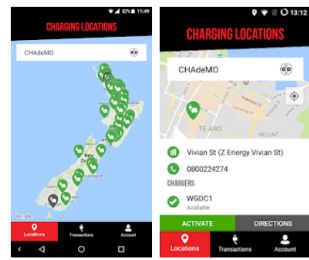
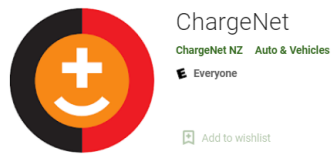
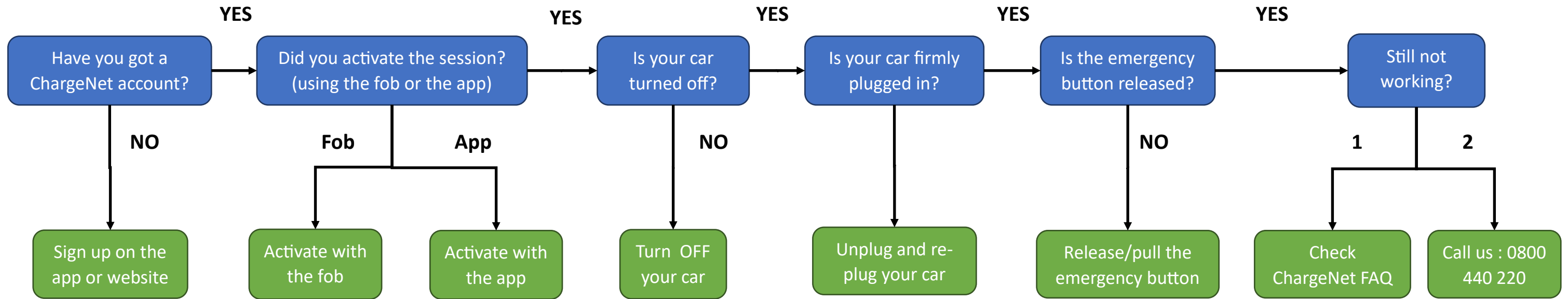


Troubleshooting: CHARGING DOESN'T START



<https://charge.net.nz/frequently-asked-questions/>



OR

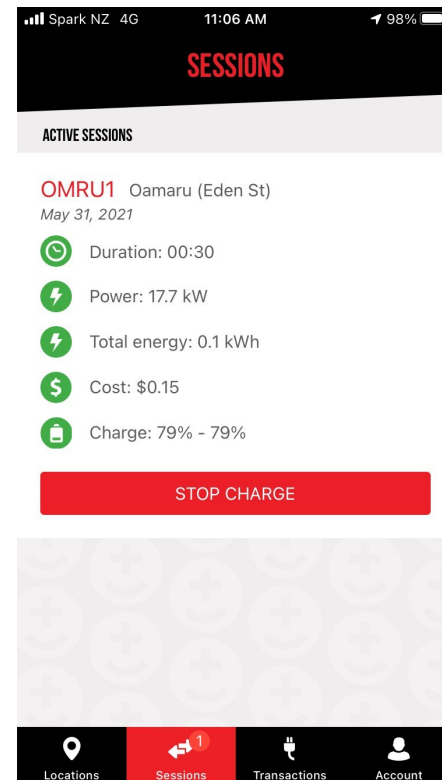
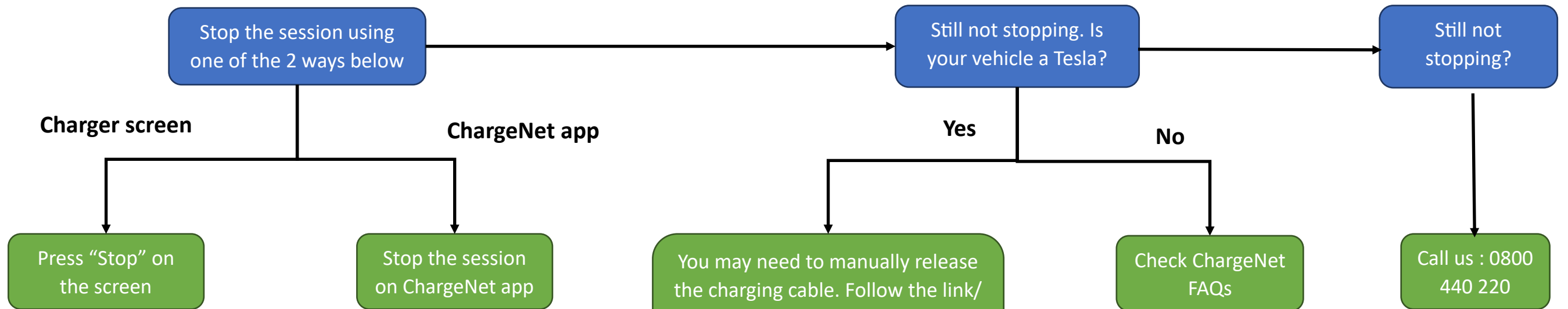
<https://app.charge.net.nz/signup>



A ChargeNet fob can be provided free of charge at Network Waitaki: 10 Chelmer street, Oamaru 9400



Troubleshooting: CHARGING DOESN'T STOP



You may need to manually release the charging cable. Follow the link/QR code below and scroll down to 'Manually Releasing Charge Cable'

https://www.tesla.com/ownersmanual/model3/en_jo/GUID-BEE08D47-0CE0-4BDD-83F2-9854FB3D578F.html



Check ChargeNet FAQs

<https://charge.net.nz/frequently-asked-questions/>



Call us : 0800 440 220